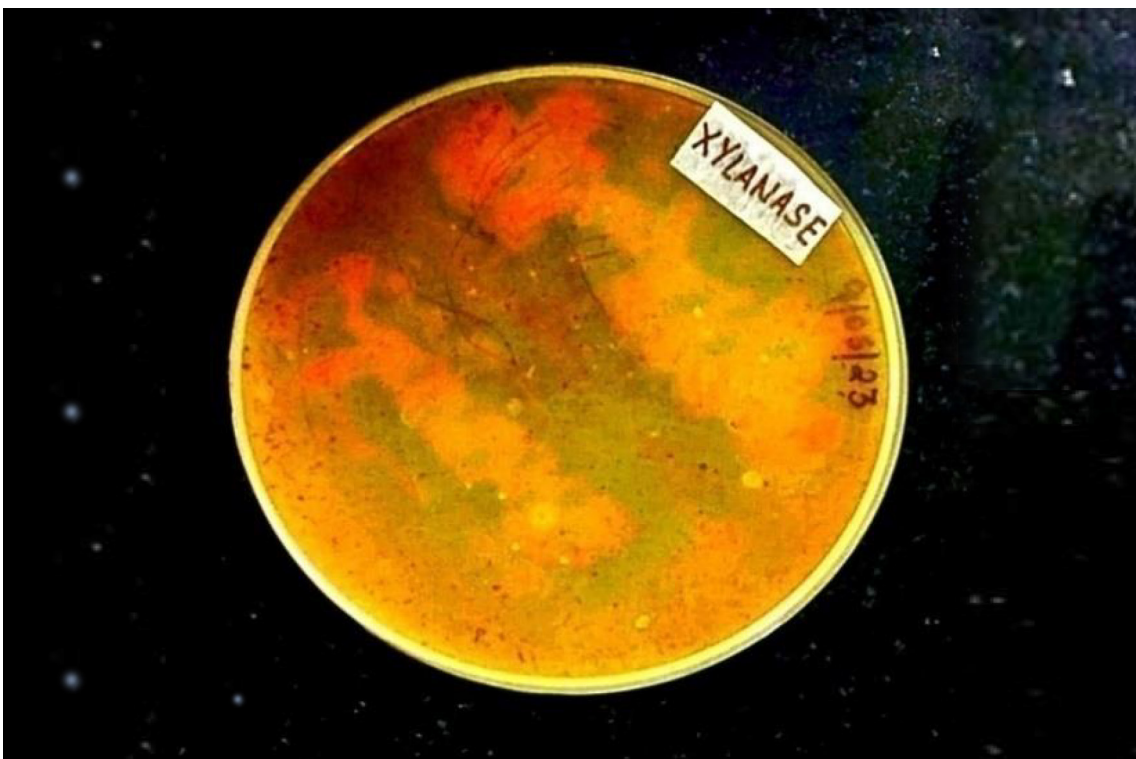


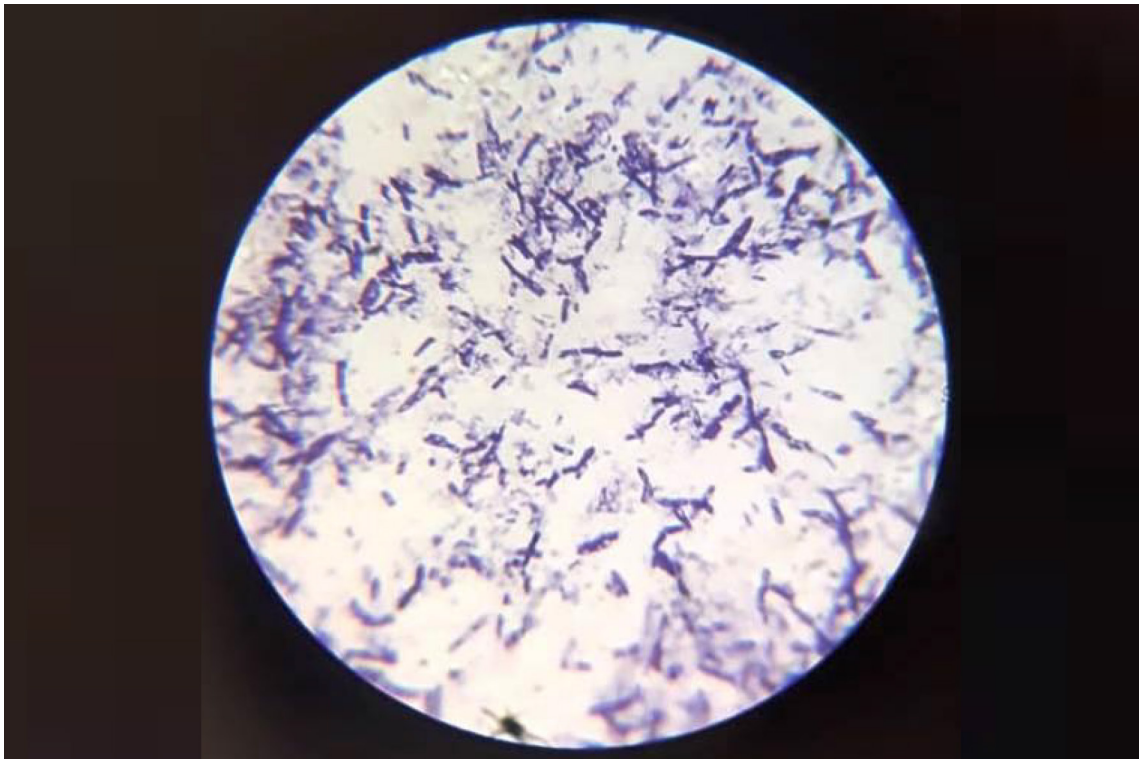
PHOTOGRAPHS



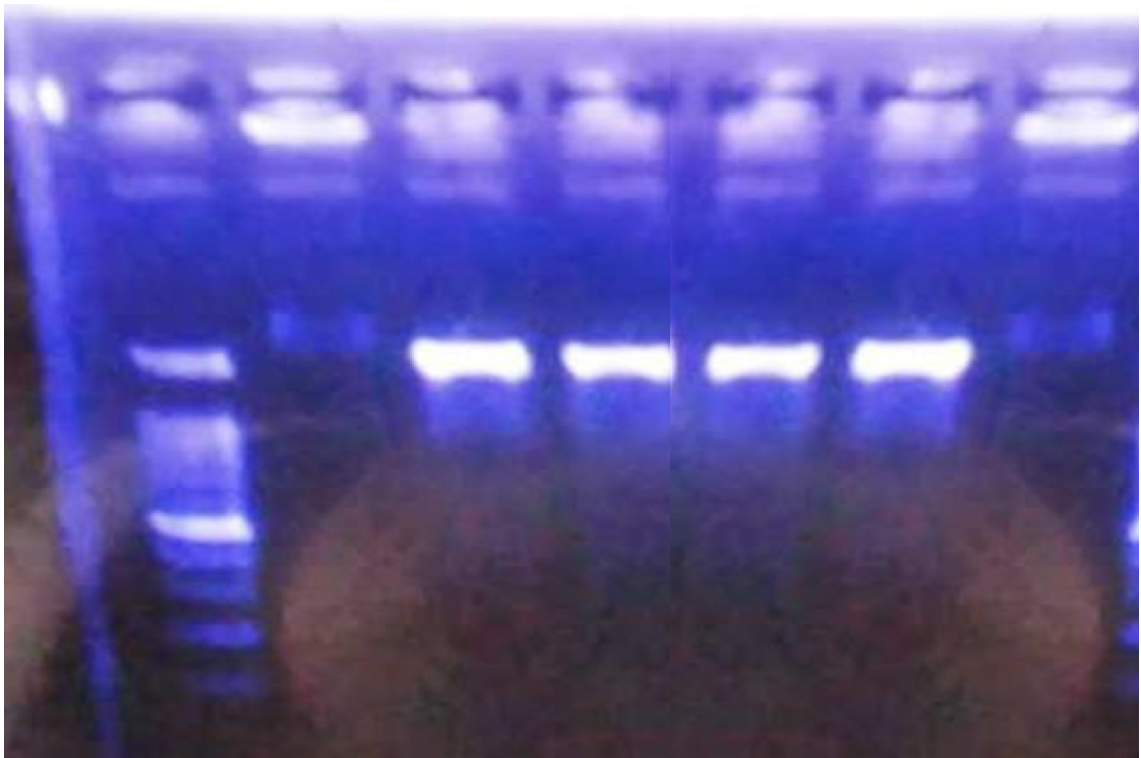
Photograph 1: Starch hydrolysis test for isolated *Bacillus cereus*



Photograph 2: Xylan hydrolysis test for isolated *Bacillus cereus*

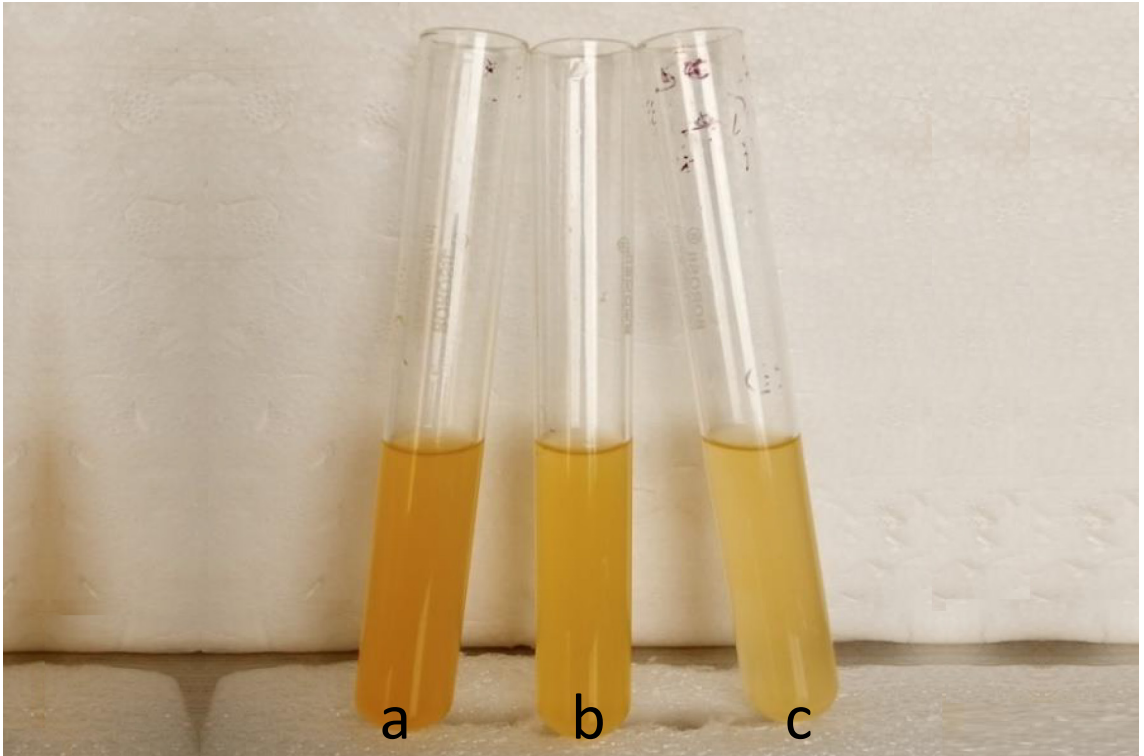


Photograph 3: Microscopy of the isolate after Gram Staining

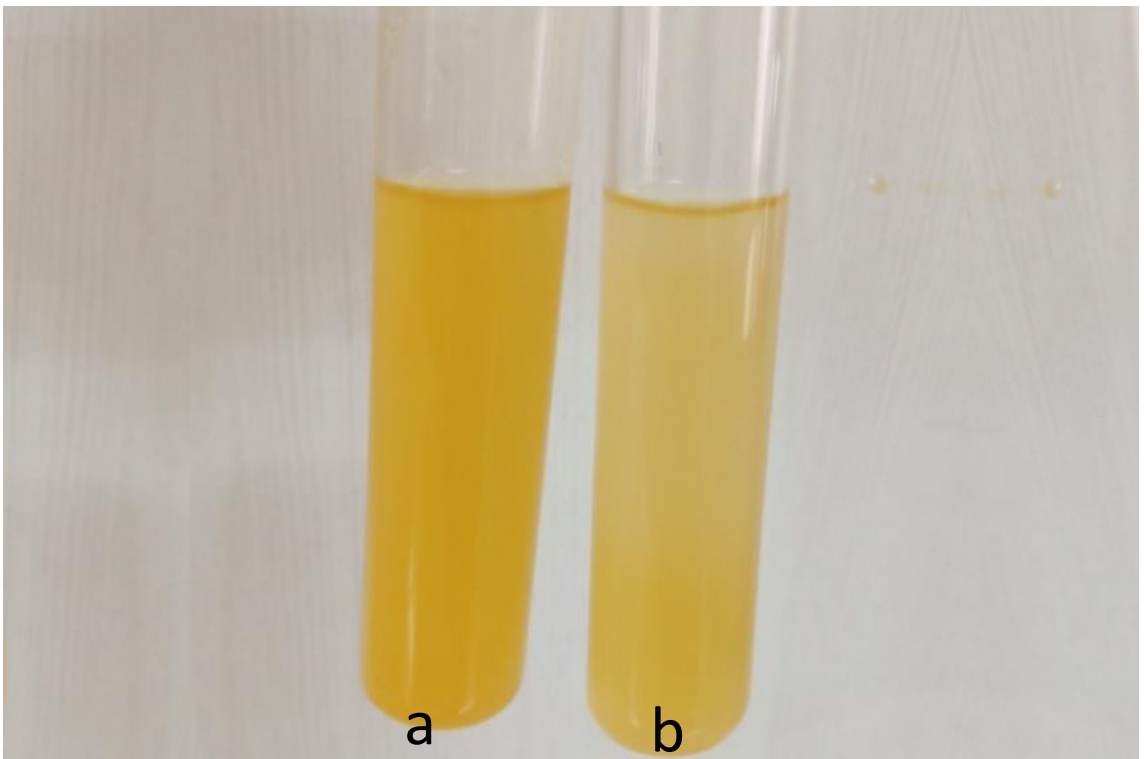


Photograph 4: Gel documentation after electrophoresis of PCR products of 16S rRNA gene of presumptive *Bacillus* sp.

Note: L1: DNA ladder; L2: Negative control; L3 & L4: 16S rRNA PCR product of isolate sample



Photograph 5: Mango Fruit clarification (a) Mango fruit juice +water (b) Mango fruit juice +Amylase (c) Mango fruit juice +Xylanase



Photograph 6: Mango Fruit clarification (a) Mango fruit juice +water (b) Mango fruit juice +Amylase +Xylanase